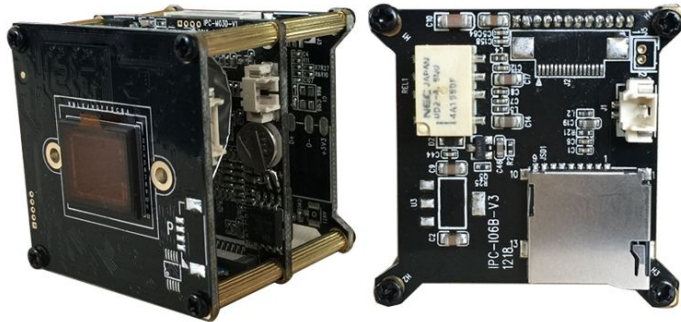


S178H16D-L26-BT3

5.0 megapixel 3 Boards IP Camera Module, Hi3516D + SONY IMX178 CMOS

1/1.8"5.0 Megapixels Progressive Scan Sony IMX178 CMOS, Hisilicon Hi3516D Chipset, the highest resolution of 2592*1944, 0.001 Lux@F1.2 (color); 38X38mm 3 boards; RS485, TF card slot, Optional Motorized lens,IR - CUT (day/night), adapt Bullet, Dome; H.264 or H.265 video coding, double stream, ONVIF 2.4, be compatible many NVR and platform management software.



Features

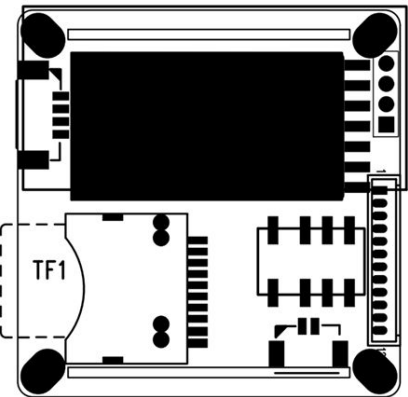
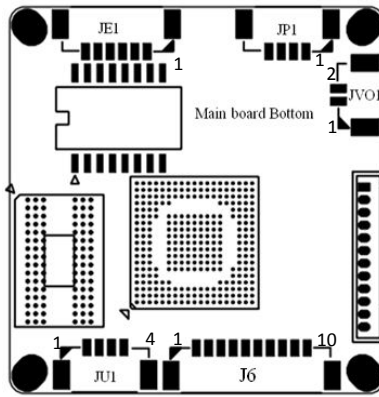
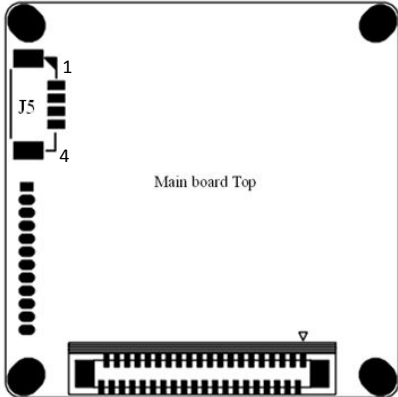
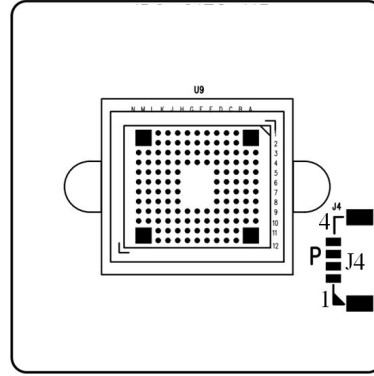
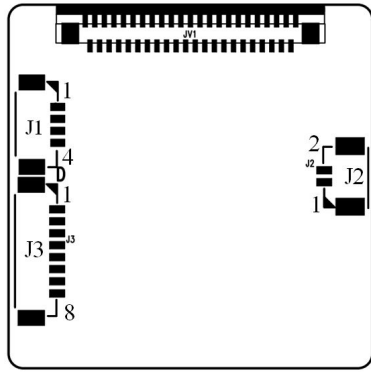
- > Hisilicon Hi3516D
- > 1/1.8" 5.0 Megapixels Progressive Scan Sony IMX178 CMOS
- > Max 25/30fps@5.0 Megapixels (2592*1944)
- > H.264/H.265 & MJPEG dual-stream encoding
- > Privacy Mask, Motion Detection
- > Support Onvif 2.4 protocol
- > TF Card Slot

Specifications

Model	S178H16D-L26-BT3
Camera	
Image Sensor	1/1.8" 5.0 megapixels Progressive Sony IMX178 CMOS
CPU	Hisilicon 3516D
Effective Pixels	2592(H)x1944(V)
Scanning System	Progressive
Electronic Shutter Speed	Auto (1/25 ~ 1/10000s)
Min. Illumination	0.001Lux/F1.2 (Color)
S/N Ratio	≥50db(AGC OFF)
Camera Features	
Day/Night	Auto(ICR)/Color/B/W
WDR	> 80db
White Balance	Auto
Gain Control	Auto
Noise Reduction	3D
Privacy Masking	Up to 4 areas

Video		
Compression		H.264/MJPEG/H.265
Resolution		2592*1944/2590*1920/2048*1536/1080P(1920*1080)/D1(704*576)/VGA(640*480)/QVGA(320*240)
Frame Rate	Main Stream	2592*1944&2590*1920(1-10fps)/2048*1536/1920*1080(1 ~ 25/30fps)
	Sub Stream	D1/VGA/QVGA(1 ~ 25/30fps)
Bit Rate		32KB ~16Mbps, support VBR, CBR
Text Overlay		Channel, Date & Time, Bit Rate
Network		
Data Storage		Video record, Picture format
Trigger		Manual, Automatic(motion detection, alarm, schedule, cycle)
Alarm data transmission		FTP, E-mail, Browser, CMS
Protocol		TCP/IP、UDP、RTP、RTSP、RTCP、HTTP、DNS、DDNS、DHCP、FTP、NTP、PPPOE、SMTP、UPNP
ONVIF		ONVIF 2.4
Max. User Access		8 users, IE, Google, Firefox
Smart Phone		Windows Mobile, iPhone, iPad, Android
Auxiliary Interface		
Audio in		Support
Audio out		Support
BNC Video out		Support
RS422/RS485		Support
USB		Support
Alarm in		Support
Alarm out		Support
IO Interface		Reset
Memory Card		Max 32G TF Card
General		
Power Supply		DC12V / PoE (802.3af)
Power Consumption		<3W
Working Environment		-20°C~+55°C , Less than 90% RH
Dimensions		38 x 38 x 35mm
Weight		0.2kg

Connector



JP1 Power Supply Connector

1	DC12V
2	CMT_R
3	CMT_T
4	GND

JE1 Network Connector

1	RJ45_1
2	RJ45_2
3	RJ45_3
4	RJ45_6
5	Network Connected Light (Green light)
6	Network Status Light (Yellow light)

J1 DC Auto-iris Connector (For AI Series)

1	Drive -
2	Damp-
3	Damp+
4	Drive +

J2 IR-cut Connector

1	IR-CUT Control Signal 5V
2	IR-CUT Control Signal 5V

J3 Motorized Lens Connector (For AZ Series and lens HV03610FB.ICR-MFZ(6MP))

1	Focus A-
2	Focus A+
3	Zoom A-
4	Zoom A+

5	Zoom B+
6	Zoom B-
7	Focus B-
8	Focus B+
J4 P-Iris Connector	
1	IRIS A-
2	IRIS B+
3	IRIS A+
4	IRIS B-
J5 IR Light Board Connector	
1	IR Light Board Power Supply (12V)
2	GND
3	IR Feedback Signal Input (0.8V-12V)
4	IC PWM Control
JVO1 BNC Video out	
1	BNC Video out
2	GND
J6 Functions Connector	
1	Audio In (MIC/ Line)
2	GND (Audio)
3	Audio Out
4	GND
5	Reset
6	Alarm In
7	Alarm Out -
8	Alarm Out +
9	RS_485+
10	RS_485-
JU1	
1	GND
2	USB_D-
3	USB_D+
4	5V Power Supply